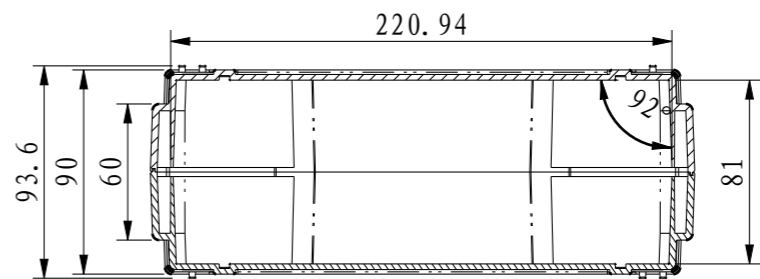
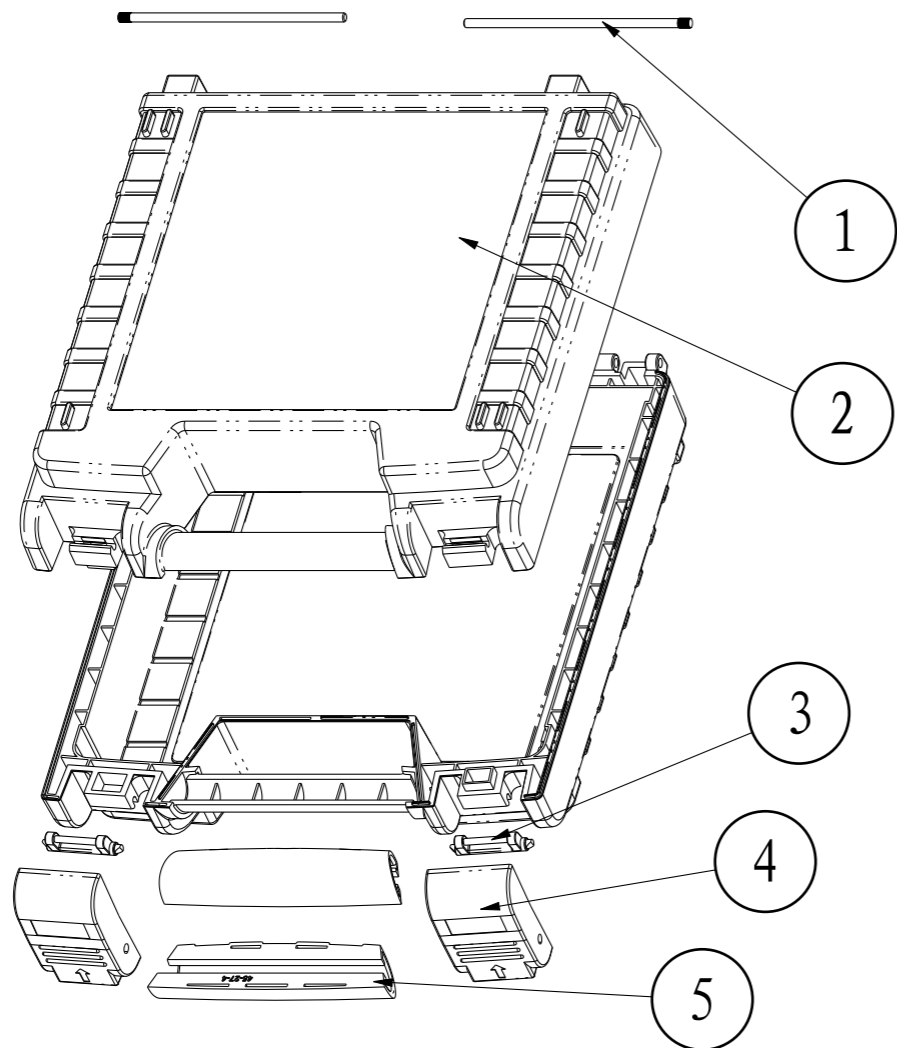
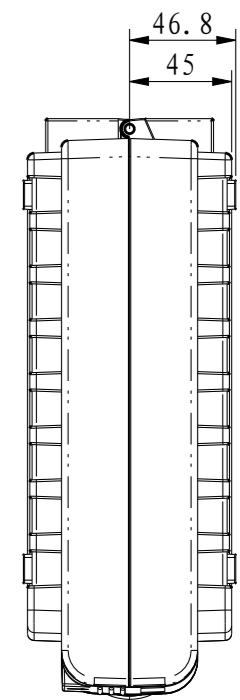
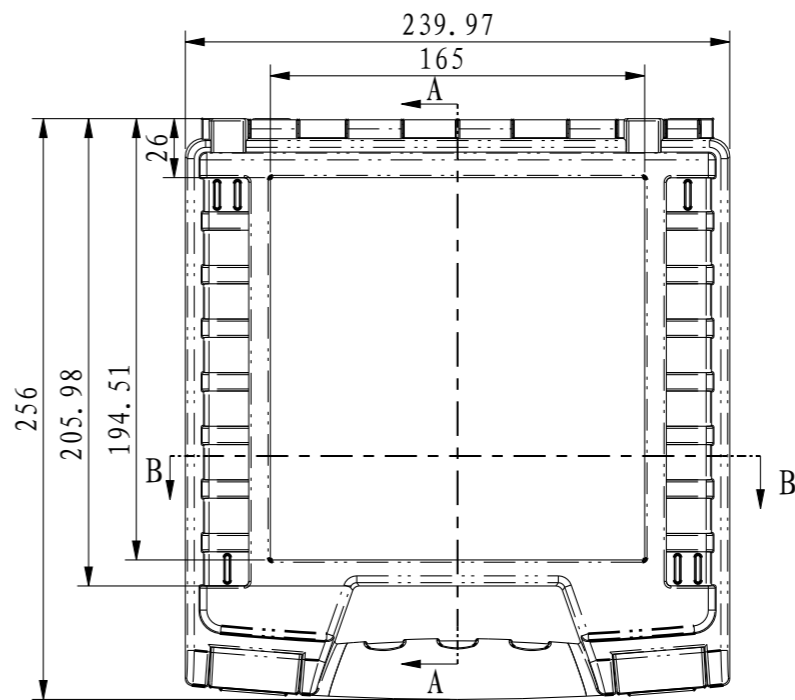
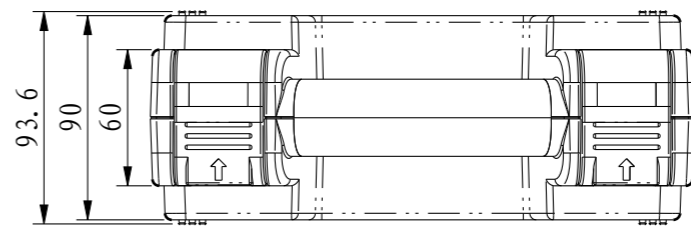


剖面A-A



截面 B-B

5	45-27-4	把手套	2	弹性体塑料		
4	45-28-2	锁扣	2	普通ABS		
3	45-27-3	锁扣固定轴	2	普通ABS		
2	45-29-1	壳体	2	普通ABS		
1	xiao4x108	销4x108	2	不锈钢		
<u>序号</u> Number	<u>产品编号</u> Product Code	<u>零件名称</u> Part Name	<u>数量</u> Quantity	<u>材料</u> Material	<u>重量(g)</u> Weight	<u>备注</u> Remarks
<u>制图</u> Drawing	<u>审核</u> Auditing	<u>批准</u> Confirm	<u>客户名称</u> Custom Name	<u>材料</u> Material		
			<u>产品名称</u> Product Name	手提箱	<u>图纸比例</u> Drawing Scale	A
			<u>产品编号</u> Product Code	45-29	<u>视图</u> Project View	(mm)
共 页 第 页			宁波三和壳体公司 NINGBO SANHE ENCLOSURE CORPORATION		中国·宁波慈溪 TEL:+86(574)63226910 FAX:+86(574)63226900	